



main photo: iStock
inset photo: David MacManus

Slash Pine
Pinus elliotii



Shirley Denton

Saw Palmetto
Serenoa repens



Shirley Denton

Red Maple
Acer rubrum



Shirley Denton

Laurel Oak
Quercus laurifolia



Dennis Woodland

Sweetgum
Liquidambar styraciflua



Shirley Denton

Sparkleberry
Vaccinium arboreum



main photo: Bill Eggers
inset photo: Caitlin Elam

Loblolly Bay
Gordonia lasianthus



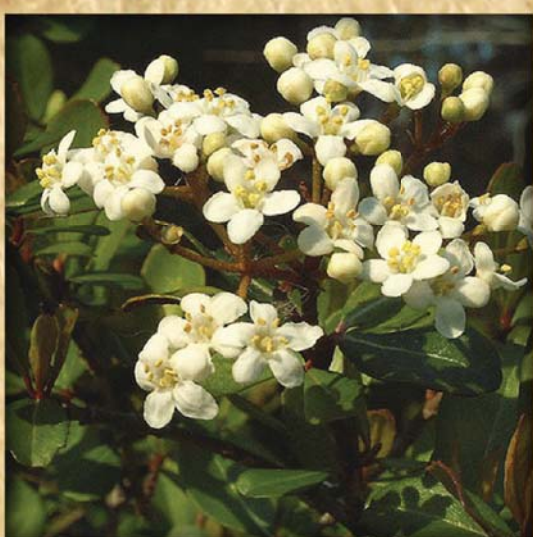
Betty Wargo

Gallberry
Ilex glabra



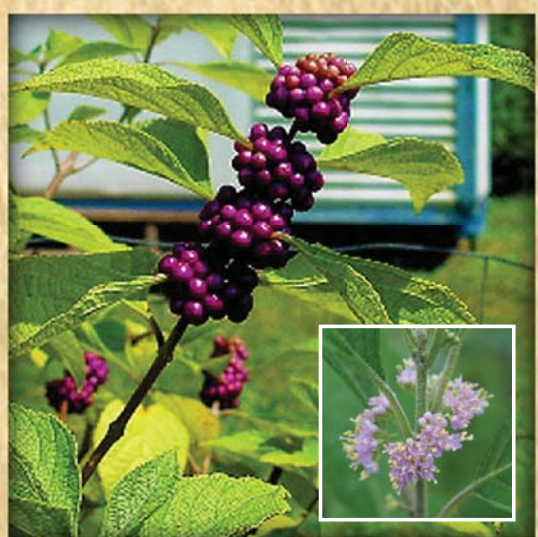
Shirley Denton

Reticulate Pawpaw
Asimina reticulata



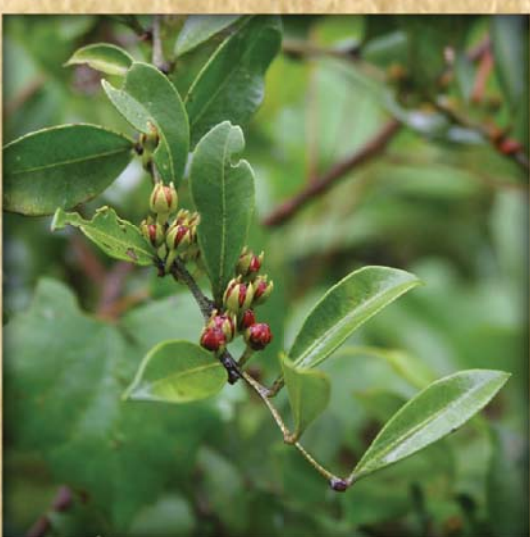
Frank Stollies

Walter's Viburnum
Viburnum obovatum



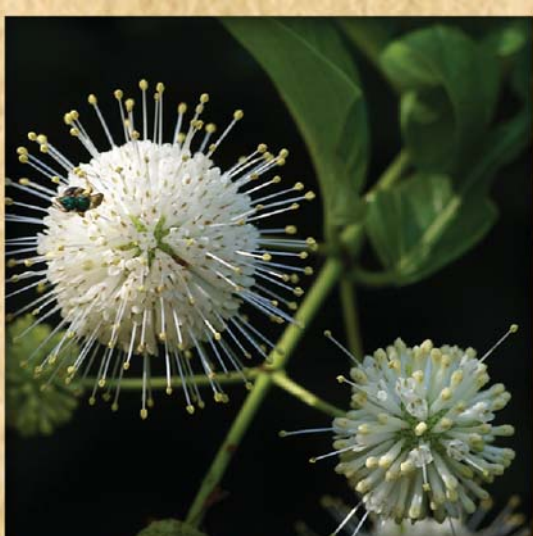
main photo: Allen Boatman
inset photo: Caitlin Elam

American Beautyberry
Callicarpa americana



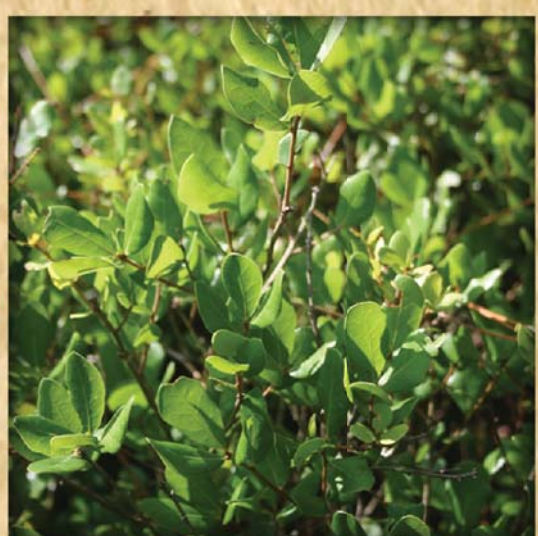
Caitlin Elam

Fetter Bush
Lyonia lucida



Linda Cooper

Common Buttonbush
Cephalanthus occidentalis



Caitlin Elam

Myrtle Oak
Quercus myrtifolia



Caitlin Elam

Hercules' Club
Zanthoxylum clava-herculis



Trees & Shrubs

Southwest Florida
Water Management District



CONSERVATION LANDS

Through its efforts to protect water resources, the Southwest Florida Water Management District buys and manages land. As a result, plants and animals that live on these lands are also protected and the public can enjoy recreational and educational activities in the great outdoors. For a more comprehensive list containing birds, mammals, butterflies, frogs, toads, insects, trees, shrubs, reptiles, wildflowers and natural communities, please visit

WaterMatters.org/species