

A GUIDE TO
RECREATION
AT THE SOUTHWEST FLORIDA
WATER MANAGEMENT DISTRICT LANDS



Southwest Florida
Water Management District



A GUIDE TO
RECREATION
AT THE SOUTHWEST FLORIDA
WATER MANAGEMENT DISTRICT LANDS



VISAY 08-08-2023

The Southwest Florida Water Management District (District) does not discriminate on the basis of disability. This nondiscrimination policy involves every aspect of the District's functions, including access to and participation in the District's programs, services and activities. Anyone requiring reasonable accommodation, or who would like information as to the existence and location of accessible services, activities, and facilities, as provided for in the Americans with Disabilities Act, should contact the Human Resources Office Chief, at 2379 Broad St., Brooksville, FL 34604-6899; telephone (352) 796-7211 or 1-800-423-1476 (FL only); or email ADACoordinator@WaterMatters.org. If you are hearing or speech impaired, please contact the agency using the Florida Relay Service, 1-800-955-8771 (TDD) or 1-800-955-8770 (Voice). If requested, appropriate auxiliary aids and services will be provided at any public meeting, forum, or event of the District. In the event of a complaint, please follow the grievance procedure located at WaterMatters.org/ADA.

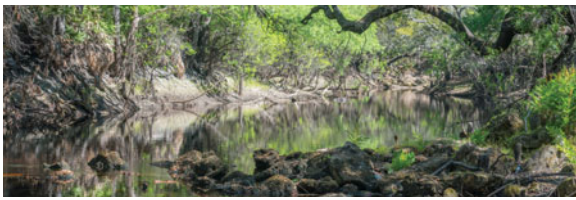
Table of Contents



Introduction	1
Why Does the District Buy Lands?	2
Guidelines for Use of District Lands	4
Property Location Map	10-11

Property Descriptions

Alafia River Corridor	12	Lake Tarpon Outfall Canal	23
Alafia River Reserve	12	Little Manatee River — Lower Tract	23
Alston Tract	12	Little Manatee River — Southfork Tract	24
Annettliga Hammock	13	Little Manatee River — Upper Tract	24
Brooker Creek Headwaters Nature Preserve	13	Little Withlacoochee Tract	24
Brooker Creek Preserve	13	Lower Hillsborough Wilderness Preserve	25
Charlotte Harbor Preserve State Park	14	Marshall Hampton Reserve	25
Chassahowitzka River and Coastal Swamps	14	Morris Bridge Park	25
Chito Branch Reserve	14	Myakka River State Park — Myakka Prairie Tract	26
Circle B Bar Reserve	15	Myakka River — Deer Prairie Creek Preserve	26
Cliff Stephens Park	15	Myakka River — Flatford Swamp Preserve	26
Colt Creek State Park	15	Myakka State Forest	27
Conner Preserve	16	Oak Ridge Equestrian Area	27
Cypress Creek Preserve	16	Panasoffkee Outlet	27
Dead River Park	16	Potts Preserve	28
Deep Creek Preserve	17	Prairie/Shell Creek	28
Edward Medard Park and Reservoir	17	RV Griffin Reserve	28
Edward W. Chance Reserve		Sawgrass Lake Park	29
Coker Prairie Tract	17	Serenova Tract	29
Gilley Creek Tract	18	Starkey Wilderness Preserve	29
Flatwoods Park	18	Tampa Bypass Canal	30
Flying Eagle Preserve	18	Terra Ceia Preserve State Park	30
Fred and Idah Schultz Preserve	19	Terra Ceia Preserve — Frog Creek	30
Green Swamp East Tract	19	Trout Creek Park	31
Green Swamp West Tract	19	Two Mile Prairie	31
Green Swamp Wilderness Preserve	20	Upper Hillsborough Preserve	31
Half Moon-Gum Slough	20	Upper Hillsborough Tract	32
Hálpata Tastanaki Preserve	20	Weeki Wachee Springs State Park	32
Hampton Tract	21	Weekiwachee Preserve	32
Jack Creek	21	Aripeka Sandhills Preserve	33
Jay B. Starkey Wilderness Park	21	Bayport Park	33
Jefferson Equestrian Area	22	Wilderness Park Off Road Trails System	33
John B. Sargeant Park	22	Withlacoochee River Park	34
Lake Marion Creek Horseshoe Scrub Tract	22	Withlapopka Community Park	34
Lake Panasoffkee	23	Wysong Park	34



Introduction

Introduction

West-central Florida is a wonderful place to get outside. From the sandy beaches on the Gulf of Mexico to the wild beauty of the Green Swamp, there's something for everybody.

Many people enjoy visiting public conservation lands obtained by the Southwest Florida Water Management District (District) and its partners to protect Florida's water resources. The District offers passive recreational activities that allow you to get fit and appreciate the environment while protecting the natural resources that make them such great places to visit. The lands are open to the public for family activities such as hiking, bicycling, hunting, horseback riding, fishing, camping, nature appreciation, paddling and picnicking. Some District lands also have facilities that are accessible for the mobility impaired.

Each of the areas owned by the District offer something unique. Learning as much as possible about a property before you visit will prepare you for what you are likely to experience. The property descriptions in this guide provide basic information about each property, such as the address, general location and a website to visit for more details.

This guide is organized into three sections. The first section provides information about the District's land management program and a list of guidelines to follow while on District lands. The second section provides a map of all properties for quick reference. The third section lists each property with location information.

We hope this guide will assist everyone seeking to get outside on District lands. For the most up-to-date information, visit **WaterMatters.org/Recreation**.

Online: **WaterMatters.org/Recreation**

Email: **Recreation@WaterMatters.org**

Telephone: **(352) 796-7211 or
1-800-423-1476 (FL only)**

U.S. Mail: **Land Resources
Southwest Florida Water
Management District
2379 Broad Street
Brooksville, FL 34604-6899**



Why Does the District Buy Lands?



Why Does the District Buy Lands?

The District was created in 1961 by the Florida Legislature to protect the water resources of the region. The District includes roughly 10,000 square miles in all or part of 16 counties in west-central Florida that are home to nearly 6 million people. The boundaries of the District extend north into Levy County, south into Charlotte County and inland into Polk and Highlands counties.

The region's lands and waters are forever linked by Florida's natural water cycles. Therefore, one of the main ways the District carries out its mission of balancing water needs and protecting the environment is by obtaining conservation lands around lakes, rivers, wetlands and estuaries. These lands serve as a natural buffer that filters out pollution from runoff before it reaches the nearest body of water. The District also buys lands to preserve and restore native Florida ecosystems that provide water resources benefits and water storage during hurricanes and other major storm events. The District's acquisition program has primarily been funded through state programs such as Save Our Rivers, Preservation 2000, Florida Forever and the Land Acquisition Trust Fund.



Land Management

The District manages its conservation lands to maintain and protect vital water functions and natural systems, which include Florida's unique plant and wildlife communities. There are four primary land management activities that occur on District lands, including the application of prescribed fire, invasive exotic species control, natural systems restoration and enhancement, and forest management. Of these management activities, the two primary tools used include mimicking the natural fire cycle that historically shaped Florida's landscape and restoring areas that have been altered by previous activities. At any time, the public may encounter District staff using methods such as prescribed fire, mechanical mowing of vegetation, harvesting timber, and seeding or planting vegetation. These



Why Does the District Buy Lands?

management techniques help to maintain healthy and abundant populations of game species, such as deer and turkey, and are important for most of Florida's threatened and endangered species.

Public Use and Recreation

While District lands vary in size and terrain, they all have at least one thing in common — they provide a variety of important benefits to the water and water-related resources within west-central Florida. Nearly all these lands are available for public use and recreation. Nature-friendly activities offer an easy and fun experience while making sure the land is protected. In keeping with the purpose for which these lands were acquired, your experience will be close to nature. That means mostly unpaved roads, portable restrooms and nature's beauty all around you.



District Partners

Did you know that many state and local parks and state forest areas are owned by the District? The District, in partnership with state and local governments, protects water resources while our partners develop parks with facilities such as picnic pavilions, nature trails, environmental education centers, restrooms and camping areas. The District usually provides the land and its partners build the facilities and provide the on-site staff to manage the parks on a daily basis. These areas are referred to as cooperatively managed properties.





Guidelines for Use of District Lands

To make sure that we, as well as future generations, can enjoy quality outdoor experiences, each one of us must share the responsibility of protecting our environment. The District supports the Leave No Trace program, which educates people who enjoy the outdoors about the nature of their recreational impacts as well as techniques to prevent and minimize such impacts.

Leave No Trace

The following seven principles of Leave No Trace are for the safety of visitors and to protect our natural resources.



Plan Ahead and Prepare

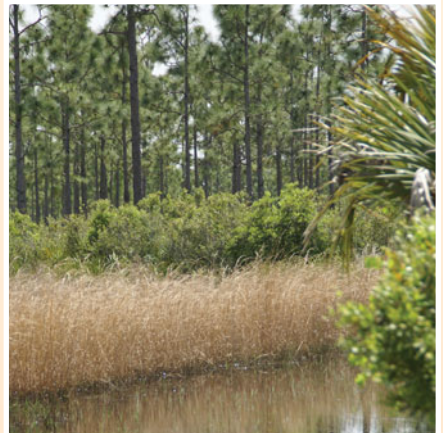
- Know the regulations and special concerns for the area you will visit.
- Make sure you have reservations for activities or use areas, if required.
- Visit WaterMatters.org/Recreation to find out if an area is closed or access is limited due to weather conditions, management activities or hunting seasons.
- Check the weather forecast and plan for possible changes in weather.
- Carry a cell phone.

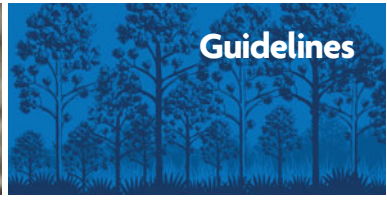
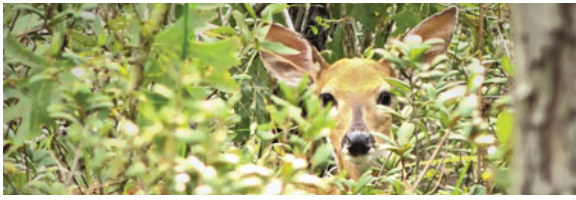


- Bring plenty of water, sunscreen, insect repellent, a hat and good pair of sneakers or walking shoes.
- Let a friend know where you are going and when you will return.
- Know where you are — use of navigation devices are suggested. Georeferenced maps are provided on the District's website, which can be added to various applications to assist in this endeavor.

Travel and Camp on Durable Surfaces

- Camping is only allowed in designated campgrounds.





Dispose of Waste Properly

- Please remember to carry out everything used during your stay. Help us keep the areas clean and natural.

Leave What You Find

- Preserve the past. Examine, but do not touch, cultural or historic structures and artifacts.
- Leave rocks, plants and other natural objects as you find them.
- Do not build structures, dig trenches or cut down trees or shrubs.

Minimize Campfire Impacts

- Use established fire rings or grills where fires are permitted.
- Keep fires small. Use only sticks from the ground that can be broken by hand.
- Do not cut down trees or bushes — dead or alive — for firewood.
- Put campfires out completely.

Respect Wildlife

- Observe wildlife from a distance. Do not follow or approach them.
- Never feed animals. Feeding animals damages their health, alters natural behaviors, and exposes them to predators and other dangers.



- Stay on designated trails to avoid trampling habitat.
- Avoid wildlife during sensitive times such as mating and nesting seasons.

Be Considerate of Other Visitors

- Respect other visitors and protect the quality of their experience.
- Be courteous, yield to other users.
 - Let nature's sounds prevail. Avoid loud voices, music and noises.
 - Use proper trail etiquette. Follow the trail right-of-way rule: bikers yield to hikers, both bikers and hikers yield to horses.



Guidelines



Activities Not Allowed

The District has set up the following rules to promote the proper use of its conservation lands. A complete listing of all rules that apply to public use of District lands can be found in Chapter 40D-9 of the Florida Administrative Code.



The following are not allowed:

- Alcoholic beverages or other intoxicants.
- Any use of all-terrain, off-road or other motorized vehicles not licensed for Florida highway use.
- Motorized vehicles, horses or bicycles outside of areas specifically designated for these modes of transportation.
- Dogs not on a leash.
- Dogs in areas not designated for dogs.
- Destruction, collection or release of plants and wildlife.
- Destruction or looting of an archaeological site or artifacts.
- Accessing District lands at points other than designated access points.
- Fireworks and explosives; igniting fires, except in designated areas.
- Damaging or removing any facilities or equipment owned or leased by the District, its designees, contractors or other public agencies.

- Commercial fishing or any activities not approved by the District.
- Littering and disposing of any waste products such as graywater, blackwater, petroleum products, toxic materials, batteries, etc.

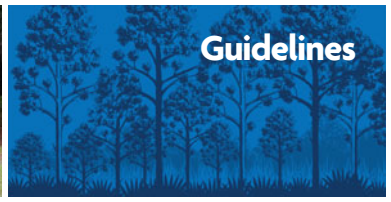
Camping Guidelines

Reservations

Check the reservation requirements before you visit. Reservations are free and required for camping on District-managed properties. Day use reservations are required for reserving a pavilion, horse-drawn buggy riding and equestrian trailer parking on some properties. Group camping activities or special events require a Special Use Authorization. Reservations can be made by creating an online account at WaterMatters.org/Recreation. Please abide by the following general camping rules and see individual property descriptions for site-specific camping information.

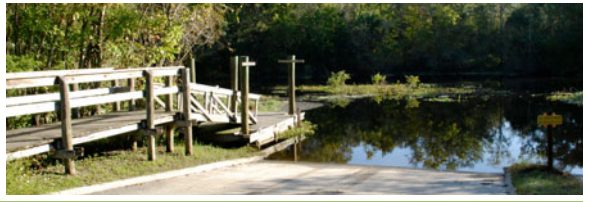
General Rules

- Camping is allowed in designated campsites only and requires a free reservation.
- Reservations are based on availability and on a first-come, first-served basis.
- A new reservation is required for each camping trip.



Guidelines

- Reservations may be made up to 30 days prior to the requested camping date.
 - Reservations may include gate combinations where vehicle access to the campground is allowed.
 - Reservations must be displayed or available at campsite.
 - Personal automobiles are permitted into equestrian and primitive campsites. Vehicles may be driven from gate to campsite **ONLY**.
 - Dogs are permitted in designated campgrounds. They must be on a leash no more than six feet in length and be well-mannered at all times.
 - Dog owners are required to pick up after their dogs; do not allow your dog to wander outside your campsite. No other pets are permitted on District lands.
 - All trees, plants and wildlife are protected.
 - Generators are permitted to run from 7 a.m. to 10 p.m. and must be kept within your campsite. No generator is to be left unattended and running.
 - Quiet time is from 10 p.m. to 7 a.m.
 - Camping is limited to seven consecutive days and there must be a full day of vacancy between reservations on District-managed properties.
 - Any additional rules and regulations will be provided on the reservation or posted at the campground kiosk.
- ### ***Equestrian Camping***
- Horses are not permitted in primitive sites.
 - Tether stakes are not permitted on District property.
 - Trees and their roots are to be protected at all times; do not tie or tether horses directly to trees.
 - All manure is to be pulverized and spread out where your horse has been kept. Do not place manure in holes or pile around trees or plants.
 - Fill in all holes and level out the site where your horse has been kept.
 - All leftover hay should be removed from property.
 - Horses are not permitted on hiking trails.
 - Each rider must carry proof of horse's current negative Coggins test.
- ### ***Equestrian Trailer Parking and Horse-Drawn Buggy Riding***
- Horseback and buggy riding are allowed only on designated or marked trails.
 - All horse-drawn buggy riding requires a free day-use reservation for buggy access behind locked gates.
 - Day-use reservations are required to access the following equestrian parking areas: Conner Preserve; Cypress Creek Preserve — Parkway Boulevard; Lower Hillsborough Wilderness Preserve — Washburn; and Upper Hillsborough Preserve.



Americans with Disabilities Act Accessibility

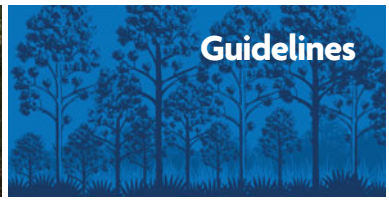
The Southwest Florida Water Management District (District) does not discriminate on the basis of disability. This nondiscrimination policy involves every aspect of the District's functions, including access to and participation in the District's programs, services and activities. Anyone requiring reasonable accommodation, or who would like information as to the existence and location of accessible services, activities, and facilities, as provided for in the Americans with Disabilities Act, should contact the District's ADA coordinator, at 2379 Broad St., Brooksville, FL 34604-6899; telephone (352) 796-7211 or 1-800-423-1476 (FL only); or email ADACoordinator@WaterMatters.org. If you are hearing or speech impaired, please contact the agency using the Florida Relay Service, 1-800-955-8771 (TDD) or 1-800-955-8770 (Voice). If requested, appropriate auxiliary aids and services will be provided at any public meeting, forum, or event of the District. In the event of a complaint, please follow the grievance procedure located at WaterMatters.org/ADA.

The District provides recreational opportunities for the mobility impaired. Some of the lands listed in this guide have accessible facilities such as paved trails, boardwalks, fishing piers, picnic areas or restrooms that meet the

standards established by the ADA. The District also provides opportunities for mobility impaired fishing and hunting in some areas.

Notice of Statutory Limitation of Liability under Section 373.1395, Florida Statutes

By law, the District is not required to ensure that its parks or recreation lands are safe for use by members of the public or to warn the public of hazardous conditions, buildings or activities on District lands. Accordingly, the District makes no assurances as to the safety of any of its parks or recreation lands, including buildings, for any purpose or activity, and generally will not provide warnings of hazardous conditions. The District is not responsible for injury to persons or property caused by any act or omission of a person while at a District park or on District recreation lands. All visitors use District parks and lands at their own risk.



Volunteering on District Lands

To meet various water management needs, the District has protected more than 459,000 acres of land in southwest Florida.



The Volunteer Program was designed to help the District accomplish its goals and to give volunteers an opportunity to participate in and learn about the management of conservation lands within the District. The Volunteer Program depends upon the combined efforts of many individuals for its successful operation.

Projects are typically done in wilderness-type areas. Volunteers may work on short-term projects or longer, multiday projects. Volunteers can participate as individuals or groups and will only need to provide appropriate clothing, time and transportation.

Why Volunteer?

Volunteering with the District's Land Resources Bureau is a great way to give back to your local community, make new friends, learn new skills and enjoy Florida's beautiful natural areas. Over the years, volunteers have contributed thousands of hours toward projects such as constructing and maintaining trails, establishing campsites, building picnic

areas, cleaning up trash and debris, and many other important land improvement projects. So, whether you would like to volunteer to work on an individual project or group project or become part of a citizen support organization, the District has opportunities to fit the needs and abilities of everyone.

Volunteer Benefits

Volunteers receive the personal satisfaction of helping out and seeing a job well done. In addition, the District provides volunteers with:

- Workers' compensation
- Liability protection
- Recognition and awards

What It Takes to Become a Volunteer

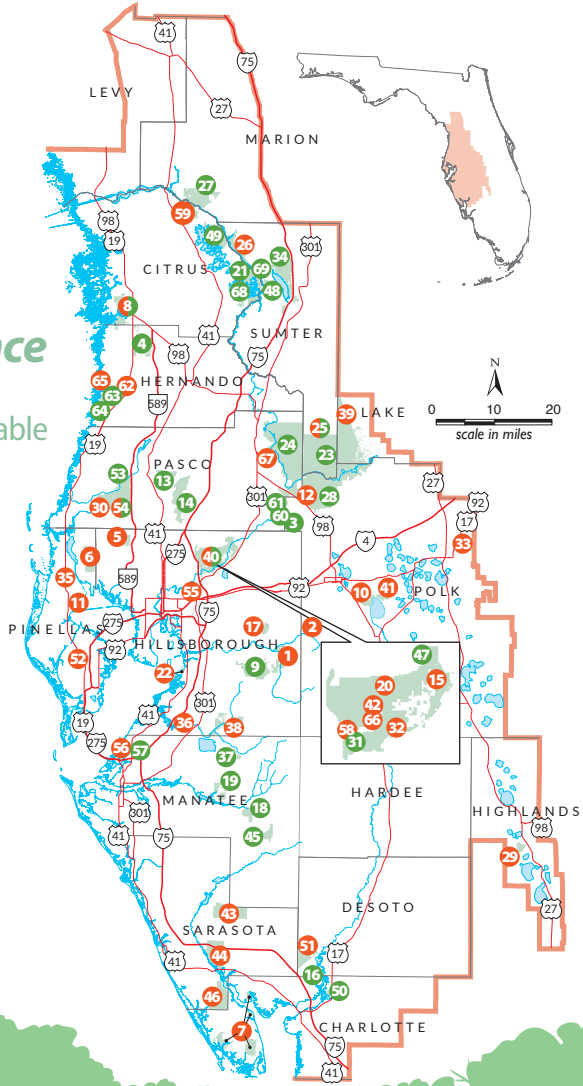
You can become a volunteer if you have a desire to help and are adaptable to a variety of working conditions. Whether you are a skilled tradesman or just handy with hedge clippers, there is a project for you. If interested, email Recreation@WaterMatters.org to request a volunteer application.

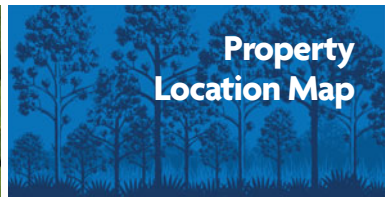
Property Location Map



Match the **Map Reference** numbers on this District map to the table on the next page.

- 45 Property Reference number (Cooperatively Managed)
- 45 Property Reference number (District Managed)
- 45 Property Reference number (Contains both Cooperatively and District-Managed properties)
- Recreation area
- Southwest Florida Water Management District boundary





Property Location Map

#	Recreation Area	#	Recreation Area
1	Alafia River Corridor	36	Little Manatee River — Lower Tract
2	Alafia River Reserve	37	Little Manatee River — Southfork Tract
3	Alston Tract	38	Little Manatee River — Upper Tract
4	Annutteliga Hammock	39	Little Withlacoochee Tract
5	Brooker Creek Headwaters Nature Preserve	40	Lower Hillsborough Wilderness Preserve
6	Brooker Creek Preserve	41	Marshall Hampton Reserve
7	Charlotte Harbor Preserve State Park	42	Morris Bridge Park
8	Chassahowitzka River and Coastal Swamps	43	Myakka River State Park — Myakka Prairie Tract
9	Chito Branch Reserve	44	Myakka River — Deer Prairie Creek Preserve
10	Circle B Bar Reserve	45	Myakka River — Flatford Swamp Preserve
11	Cliff Stephens Park	46	Myakka State Forest
12	Colt Creek State Park	47	Oak Ridge Equestrian Area
13	Conner Preserve	48	Panasoffkee Outlet
14	Cypress Creek Preserve	49	Potts Preserve
15	Dead River Park	50	Prairie/Shell Creek
16	Deep Creek Preserve	51	RV Griffin Reserve
17	Edward Medard Park and Reservoir	52	Sawgrass Lake Park
18	Edward W. Chance Reserve — Coker Prairie Tract	53	Serenova Tract
19	Edward W. Chance Reserve — Gilley Creek Tract	54	Starkey Wilderness Preserve
20	Flatwoods Park	55	Tampa Bypass Canal
21	Flying Eagle Preserve	56	Terra Ceia Preserve State Park
22	Fred and Idah Schultz Preserve	57	Terra Ceia Preserve — Frog Creek
23	Green Swamp Wilderness Preserve East Tract	58	Trout Creek Conservation Park
24	Green Swamp Wilderness Preserve West Tract	59	Two Mile Prairie
25	Green Swamp Wilderness Preserve	60	Upper Hillsborough Preserve
26	Half Moon-Gum Slough	61	Upper Hillsborough Tract
27	Hálpata Tastanaki Preserve	62	Weeki Wachee Springs State Park
28	Hampton Tract	63	Weekiwachee Preserve
29	Jack Creek	64	Weekiwachee Preserve Aripeka Sandhills Preserve
30	Jay B. Starkey Wilderness Park	65	Weekiwachee Preserve Bayport Park
31	Jefferson Equestrian Area	66	Wilderness Park Off Road Trails System
32	John B. Sargeant Park	67	Withlacoochee River Park
33	Lake Marion Creek Horseshoe Scrub Tract	68	Withlapopka Community Park
34	Lake Panasoffkee	69	Wysong Park
35	Lake Tarpon Outfall Canal		



Properties



Alafia River Corridor

North Location: 9256 S. County Road 39,
Plant City, FL 33567

South Location: 12098 S. County Road 39,
Lithia, FL 33547

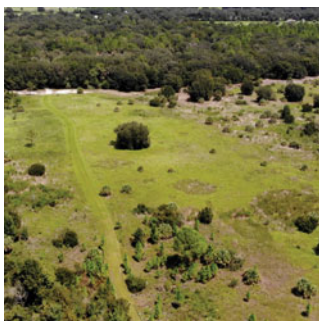


Location

Southeastern Hillsborough County

For More Information

WaterMatters.org/Recreation/Alafia-River-Corridor



Alafia River Reserve

4872 Indian Oak Drive
Mulberry, FL 33860

Location

West-central Polk County

For More Information

WaterMatters.org/Recreation/Alafia-River-Reserve



Alston Tract

(This tract is part of the Upper
Hillsborough Preserve.)

42144 Deems Road
Zephyrhills, FL 33540

Location

East of Zephyrhills

For More Information

WaterMatters.org/Recreation/Alston-Tract





Properties



Annutteliga Hammock

11019 Centralia Road
Weeki Wachee, FL 34614

Location

Northwestern Hernando County

For More Information

WaterMatters.org/Recreation/Annutteliga-Hammock



Brooker Creek Headwaters Nature Preserve

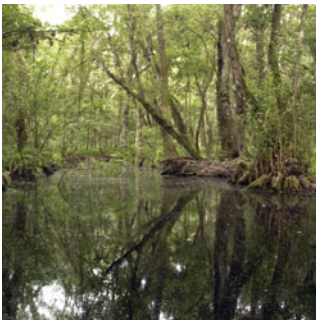
18102 Ramblewood Road
Odessa, FL 33556

Location

Northwest Hillsborough County

For More Information

WaterMatters.org/Recreation/Brooker-Creek-Headwaters-Nature-Preserve



Brooker Creek Preserve

3940 Keystone Road
Tarpon Springs, FL 34688

Location

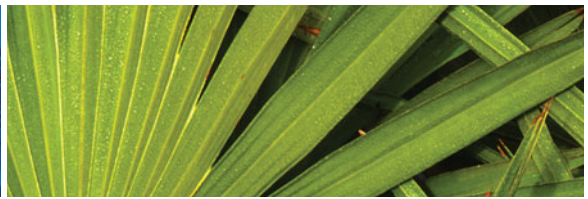
Northeast Pinellas County

For More Information

WaterMatters.org/Recreation/Brooker-Creek-Preserve



Properties



Charlotte Harbor Preserve State Park

12301 Burnt Store Road
Punta Gorda, FL 33955

Location

Western Charlotte County

For More Information

WaterMatters.org/Recreation/Charlotte-Harbor-Preserve-State-Park



Chassahowitzka River and Coastal Swamps

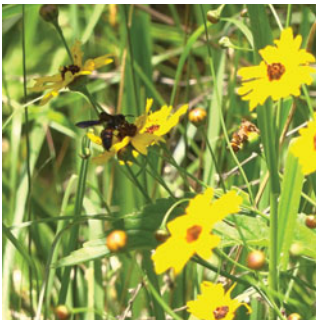
8600 Miss Maggie Drive —
Campground and Office

7940 Burnt Bridge Road — *Hiking Trails*
Homosassa, FL 34448

Location Southwestern Citrus County

For More Information

WaterMatters.org/Recreation/Chassahowitzka-River-and-Coastal-Swamps



Chito Branch Reserve

11254 Browning Road
Lithia, FL 33547

Location

Southeastern Hillsborough County

For More Information

WaterMatters.org/Recreation/Chito-Branch-Reserve





Properties



Circle B Bar Reserve

4399 Winter Lake Road (SR 540)
Lakeland, FL 33803

Location

Northwestern Polk County

For More Information

WaterMatters.org/Recreation/Circle-B-Bar-Reserve



Cliff Stephens Park

600 Fairwood Avenue
Clearwater, FL 33759

Location

Central Pinellas County

For More Information

WaterMatters.org/Recreation/Cliff-Stephens-Park



Colt Creek State Park

(This tract is part of the Green Swamp
Wilderness Preserve.)

16000 SR 471
Lakeland, FL 33809

Location

North of Lakeland

For More Information

WaterMatters.org/Recreation/Colt-Creek-State-Park



Properties

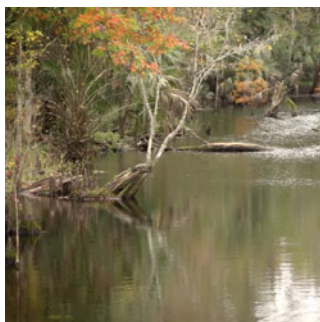


Conner Preserve

22500 SR 52
Land O' Lakes, FL 34637

Location
Central Pasco County

For More Information
WaterMatters.org/Recreation/Conner-Preserve

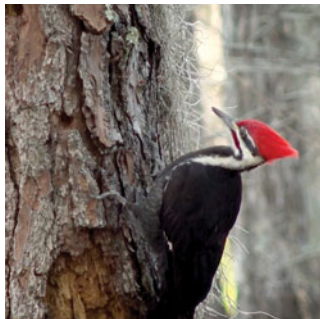


Cypress Creek Preserve

8720 Pump Station Road
5550 Parkway Boulevard —
Campground
Land O' Lakes, FL 34639

Location
Central Pasco County

For More Information
WaterMatters.org/Recreation/Cypress-Creek-Preserve



Dead River Park

(This tract is part of the Lower
Hillsborough Wilderness Preserve.)
15098 Dead River Road
Thonotosassa, FL 33592

Location
Northeast of Tampa

For More Information
WaterMatters.org/Recreation/Dead-River-Park





Properties



Deep Creek Preserve

10797 SW Peace River Street
Arcadia, FL 34269

Location

Southwestern DeSoto County

For More Information

WaterMatters.org/Recreation/Deep-Creek-Preserve



Edward Medard Park and Reservoir

6140 Turkey Creek Road
Plant City, FL 33567

Location

Eastern Hillsborough County

For More Information

WaterMatters.org/Recreation/Edward-Medard-Park-and-Reservoir



Edward W. Chance Reserve — Coker Prairie Tract

34300 East SR 64
Myakka City, FL 34251

Location

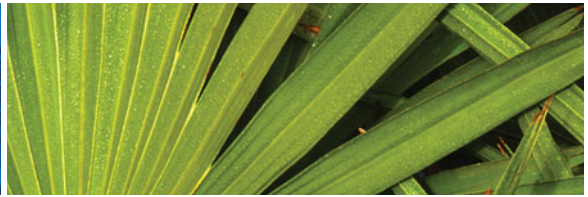
Eastern Manatee County

For More Information

WaterMatters.org/Recreation/Edward-W-Chance-Reserve-Coker-Prairie-Tract



Properties



Edward W. Chance Reserve — Gilley Creek Tract

22310 CR 675
Parrish, FL 34219

Location
Eastern Manatee County

For More Information

WaterMatters.org/Recreation/Edward-W-Chance-Reserve-Gilley-Creek-Tract



Flatwoods Park (This tract is part of the Lower Hillsborough Wilderness Preserve.)

14302 Morris Bridge Road
Thonotosassa, FL 33592

Location
Northeast of Tampa

For More Information

WaterMatters.org/Recreation/Flatwoods-Park



Flying Eagle Preserve 11080 East Moccasin Slough Road Inverness, FL 34450

Location
Eastern Citrus County

For More Information

WaterMatters.org/Recreation/Flying-Eagle-Preserve





Properties



Fred and Idah Schultz Preserve

5906 Kracker Avenue
Gibsonton, FL 33534

Location

Southern Hillsborough County

For More Information

WaterMatters.org/Recreation/Fred-and-Idah-Schultz-Preserve



Green Swamp East Tract

(This tract is part of the Green Swamp Wilderness Preserve.)

28057 SR 471
Webster, FL 33597

Location

Southwestern Lake, northern Polk and southeastern Sumter counties

For More Information

WaterMatters.org/Recreation/Green-Swamp-East-Tract



Green Swamp West Tract

(This tract is part of the Green Swamp Wilderness Preserve.)

13347 Ranch Road
Dade City, FL 33525

Location

Eastern edge of Pasco County

For More Information

WaterMatters.org/Recreation/Green-Swamp-West-Tract





Green Swamp Wilderness Preserve

Location

Four-corner area of Lake, Pasco, Polk
and Sumter counties

For More Information

WaterMatters.org/Recreation/Green-Swamp-Wilderness-Preserve



Half Moon-Gum Slough

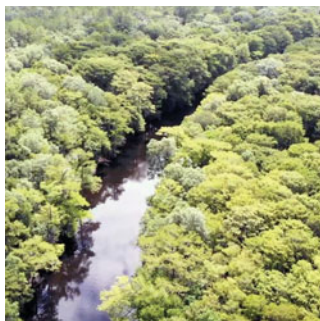
8864 CR 247
Lake Panasoffkee, FL 33538

Location

Northwestern Sumter County

For More Information

WaterMatters.org/Recreation/Half-Moon-Gum-Slough



Hálpata Tastanaki Preserve

15430 SW CR 484
Dunnellon, FL 34431

Location

Southwest Marion County

For More Information

WaterMatters.org/Recreation/Halpata-Tastanaki-Preserve





Hampton Tract

(This tract is part of the Green Swamp Wilderness Preserve.)

14980 Rock Ridge Road
Lakeland, FL 33809

Location

Northwestern Polk County

For More Information

WaterMatters.org/Recreation/Hampton-Tract



Jack Creek

4501 Grand Concourse Road
Sebring, FL 33875

Location

Highlands County

For More Information

WaterMatters.org/Recreation/Jack-Creek



Jay B. Starkey Wilderness Park

(This tract is part of the Starkey Wilderness Preserve.)

10500 Wilderness Park Boulevard
New Port Richey, FL 34655

Location

Western Pasco County

For More Information

WaterMatters.org/Recreation/Jay-B-Starkey-Wilderness-Park



Properties



Jefferson Equestrian Area

(This tract is part of the Lower Hillsborough Wilderness Preserve.)

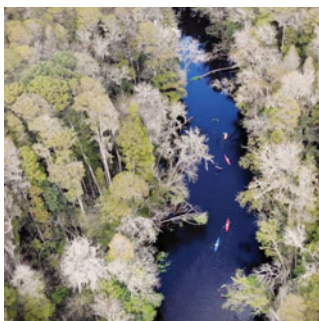
11891 Jefferson Road
Thonotosassa, FL 33592

Location

Northeast of Tampa

For More Information

WaterMatters.org/Recreation/Jefferson-Equestrian-Area



John B. Sargeant Park

(This tract is part of the Lower Hillsborough Wilderness Preserve.)

12702 US 301 N.
Thonotosassa, FL 33592

Location

Northeast of Tampa

For More Information

WaterMatters.org/Recreation/John-B-Sargeant-Park



Lake Marion Creek Horseshoe Scrub Tract

North Gate: Horseshoe Creek Road,
Davenport, FL 33837

South Gate: Baker Dairy Road,
Haines City, FL 33844

Location Northeastern Polk County

For More Information

WaterMatters.org/Recreation/Lake-Marion-Creek-Horseshoe-Scrub-Tract





Properties



Lake Panasoffkee

7519 NW 18th Way
Wildwood, FL 34785

Location

West-central Sumter County

For More Information

WaterMatters.org/Recreation/Lake-Panasoffkee



Lake Tarpon Outfall Canal

3120 Tampa Road
Oldsmar, FL 34677

Location

Northeastern Pinellas County

For More Information

WaterMatters.org/Recreation/Lake-Tarpon-Outfall-Canal



Little Manatee River — Lower Tract

River Access Only

Location

Southwestern Hillsborough County

For More Information

WaterMatters.org/Recreation/Little-Manatee-River-Lower-Tract



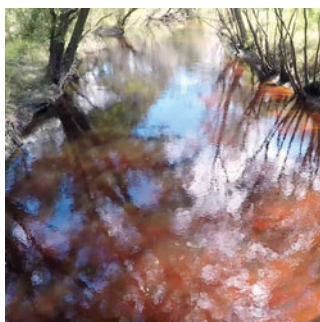


Little Manatee River — Southfork Tract

29400 SR 62
Duette, FL 33834

Location
Northeastern Manatee County

For More Information
WaterMatters.org/Recreation/Little-Manatee-River-Southfork-Tract

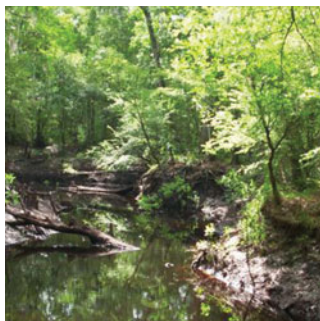


Little Manatee River — Upper Tract

2608 S. CR 579
Wimauma, FL 33598

Location
Southern Hillsborough County

For More Information
WaterMatters.org/Recreation/Little-Manatee-River-Upper-Tract



Little Withlacoochee Tract

(This tract is part of the Green Swamp
Wilderness Preserve.)

Location
Southwestern Lake County

For More Information
WaterMatters.org/Recreation/Little-Withlacoochee-Tract





Properties



Lower Hillsborough Wilderness Preserve

Location
Northeast of Tampa

For More Information
WaterMatters.org/Recreation/Lower-Hillsborough-Wilderness-Preserve



Marshall Hampton Reserve

3115 Thornhill Road
Winter Haven, FL 33880

Location
Northwest/Central Polk County

For More Information
WaterMatters.org/Recreation/Marshall-Hampton-Reserve



Morris Bridge Park

(This tract is part of the Lower Hillsborough Wilderness Preserve.)

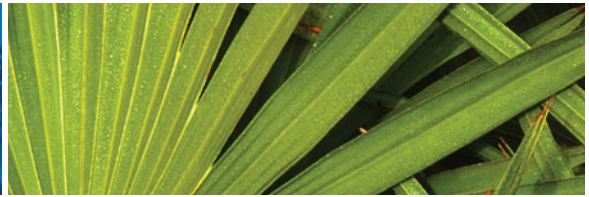
13630 Morris Bridge Road
Thonotosassa, FL 33592

Location
Northeast of Tampa

For More Information
WaterMatters.org/Recreation/Morris-Bridge-Park



Properties



Myakka River State Park — Myakka Prairie Tract

13208 SR 72
Sarasota, FL 34241

Location
Central Sarasota County

For More Information

WaterMatters.org/Recreation/Myakka-River-State-Park-Myakka-Prairie-Tract



Myakka River — Deer Prairie Creek Preserve

7001 Forbes Trail
Venice, FL 34292

Location
South-central Sarasota County

For More Information

WaterMatters.org/Recreation/Myakka-River-Deer-Prairie-Creek



Myakka River — Flatford Swamp Preserve

39450 Taylor Road
Myakka City, FL 34251

Location
Eastern Manatee County

For More Information

WaterMatters.org/Recreation/Myakka-River-Flatford-Swamp





Myakka State Forest

2555 South River Road
Englewood, FL 34295

Location

Southwestern Sarasota County

For More Information

WaterMatters.org/Recreation/Myakka-State-Forest



Oak Ridge Equestrian Area

(This tract is part of the Lower Hillsborough Wilderness Preserve.)

15847 Morris Bridge Road
Thonotosassa, FL 33592

Location

Northeast of Tampa

For More Information

WaterMatters.org/Recreation/Oak-Ridge-Equestrian-Area



Panasoffkee Outlet

3100 CR 413
Lake Panasoffkee, FL 33538

Location

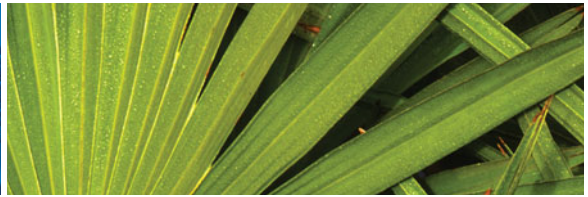
Northwest Sumter County

For More Information

WaterMatters.org/Recreation/Panasoffkee-Outlet



Properties



Potts Preserve

2700 Dee River Road —
Equestrian Camping

2988 North Hooty Point —
River Hiking Trail and Campground
Inverness, FL 34453

Location

Northeastern Citrus County

For More Information

WaterMatters.org/Recreation/Potts-Preserve



Prairie/Shell Creek

3081 Duncan Road
Punta Gorda, FL 33982

Location

Charlotte County

For More Information

WaterMatters.org/Recreation/Prairie/Shell-Creek



RV Griffin Reserve

9067 CR 769
Arcadia, FL 34269

Location

Southwest DeSoto County

For More Information

WaterMatters.org/Recreation/Rv-Griffin-Reserve





Properties



Sawgrass Lake Park

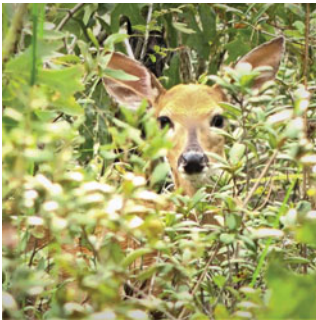
7400 25th Street N.
St. Petersburg, FL 33702

Location

Central Pinellas County

For More Information

WaterMatters.org/Recreation/Sawgrass-Lake-Park



Serenova Tract

(This tract is part of the Starkey
Wilderness Preserve.)

14900 SR 52
Land O' Lakes, FL 34638

Location

Western Pasco County

For More Information

WaterMatters.org/Recreation/Serenova-Tract



Starkey Wilderness Preserve

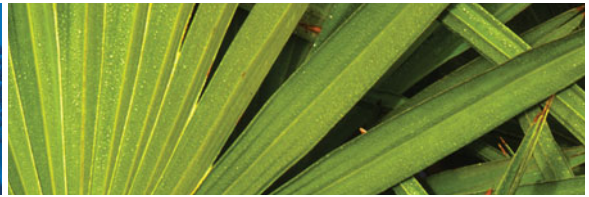
Location

Western Pasco County

For More Information

WaterMatters.org/Recreation/Starkey-Wilderness-Preserve





Tampa Bypass Canal

7171 North US 301
Tampa, FL 33610

Location
East Tampa

For More Information

WaterMatters.org/Recreation/Tampa-Bypass-Canal



Terra Ceia Preserve State Park

130 Terra Ceia Road
Terra Ceia, FL 34250

Location
Manatee County

For More Information

WaterMatters.org/Recreation/Terra-Ceia-Preserve-State-Park



Terra Ceia Preserve — Frog Creek

2519 85th Street East
Palmetto, FL 34221

Location
Northeast Manatee County

For More Information

WaterMatters.org/Recreation/Terra-Ceia-Preserve-Frog-Creek





Properties



Trout Creek Conservation Park

(This tract is part of the Lower Hillsborough Wilderness Preserve.)
12550 Morris Bridge Road
Thonotosassa, FL 33592



Location

Northeast of Tampa

For More Information

WaterMatters.org/Recreation/Trout-Creek-Conservation-Park



Two Mile Prairie

(This tract is part of the Withlacoochee State Forest.)
7112 N. Lecanto Highway (C-491)
Hernando, FL 34442



Location

Northern Citrus County

For More Information

WaterMatters.org/Recreation/Two-Mile-Prairie



Upper Hillsborough Preserve

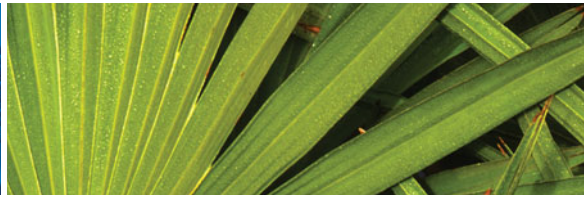
Location
East of Zephyrhills



For More Information

WaterMatters.org/Recreation/Upper-Hillsborough-Preserve





Upper Hillsborough Tract

(This tract is part of the Upper Hillsborough Preserve.)

41404 CR 54
Zephyrhills, FL 33540

Location

East of Zephyrhills

For More Information

WaterMatters.org/Recreation/Upper-Hillsborough-Tract



Weeki Wachee Springs State Park

6131 Commercial Way
Weeki Wachee, FL 34606

Location

Western Hernando County

For More Information

WaterMatters.org/Recreation/Weeki-Wachee-Springs-State-Park



Weekiwachee Preserve

2345 Osowaw Boulevard
Spring Hill, FL 34607

Location

Western Hernando County

For More Information

WaterMatters.org/Recreation/Weekiwachee-Preserve





Properties



Weekiwachee Preserve Aripeka Sandhills Preserve

18000 Aripeka Road
Hudson, FL 34667

Location

Northwest Pasco County

For More Information

WaterMatters.org/Recreation/Weekiwachee-Preserve-Aripeka-Sandhills-Preserve



Weekiwachee Preserve Bayport Park

4141 Cortez Boulevard
Spring Hill, FL 34607

Location

Western Hernando County

For More Information

WaterMatters.org/Recreation/Weekiwachee-Preserve-Bayport-Park



Wilderness Park Off Road Trails System

(This tract is part of the Lower
Hillsborough Wilderness Preserve.)

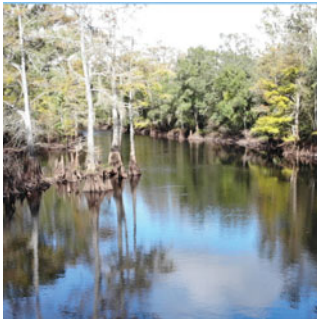
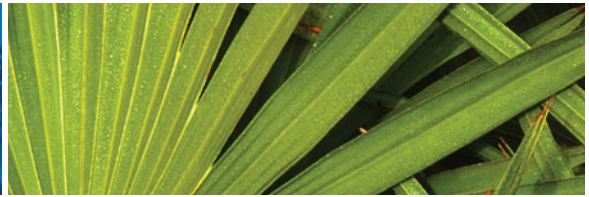
12651 Morris Bridge Road
Thonotosassa, FL 33592

Location Northeast of Tampa

For More Information

WaterMatters.org/Recreation/Wilderness-Park-Road-Trails-System





Withlacoochee River Park

12449 Withlacoochee Boulevard
Dade City, FL 33525

Location

Eastern Pasco County

For More Information

WaterMatters.org/Recreation/Withlacoochee-River-Park



Withlapopka Community Park

(This tract is part of the Flying Eagle Preserve.)

10390 E. Gobbler Drive
Inverness, FL 34450

Location Eastern Citrus County

For More Information

WaterMatters.org/Recreation/Withlapopka-Community-Park



Wysong Park

4790 NW 46th Road
Lake Panasoffkee, FL 33538

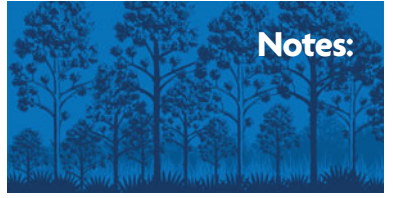
Location

Northwest Sumter County

For More Information

WaterMatters.org/Recreation/Wysong-Park





Notes:



Southwest Florida
Water Management District

